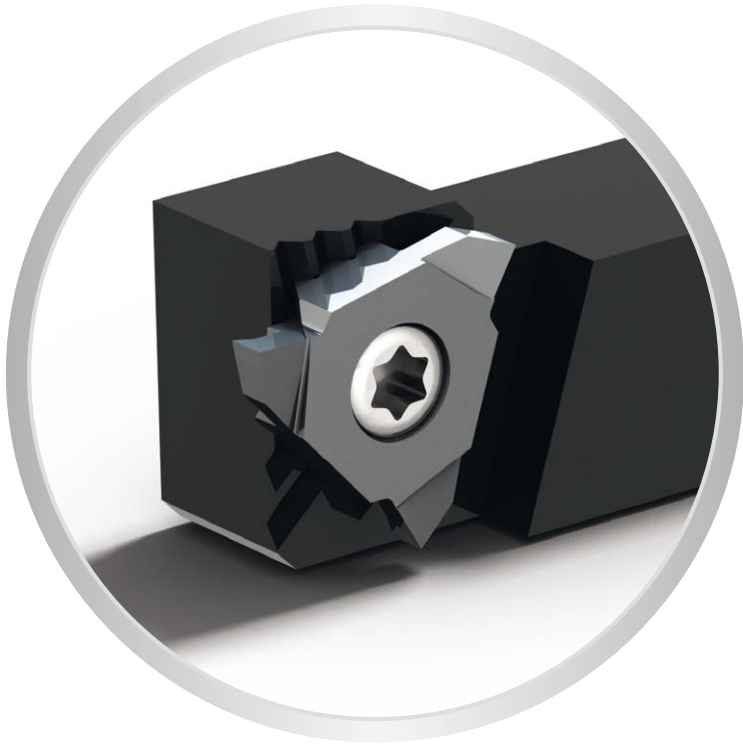


APPLITEC



PERFORMANCE | PRECISION | RIGIDITY

Index

Conseils d'utilisation - Accessoires
 Anwendungsempfehlungen - Zubehör
 Application recommendations - Accessories



> **2.03**

Porte-outils
 Halter
 Holders



> **2.04**

GX

Gorge de précision
 Präzisionseinstechen
 High precision grooving

DIN6799
 & DIN471



> **2.05**

FT

Tournage finition
 Schlicht drehen
 Fine turning



> **2.06**

GT

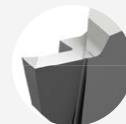
Foncer tourner
 Einstechen und drehen
 Grooving and turning



> **2.07**

GTX

Foncer tourner avec coupe positive
 Einstechen und drehen mit positivem Spanwinkel
 Grooving and turning with positive cut



> **2.08**

EP

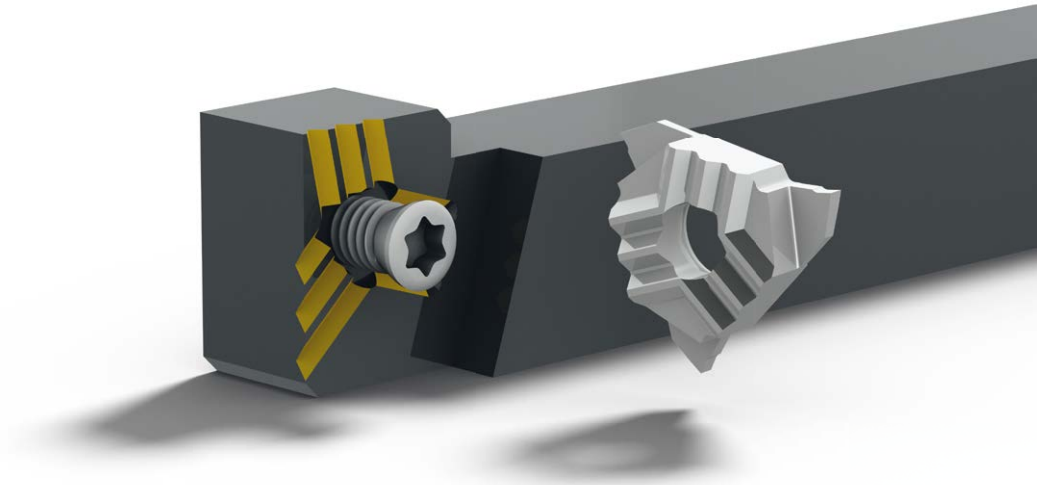
Plaquette ébauche
 WSP-Rohling
 Blank insert



> **2.09**

Info

Rigid clamping system with the famous Applitec teeth clamping



Nuance micro-grain à dureté élevée

Verschleissfeste Feinkornsorten

Wear resistant micro-grain grades

HTA

μK10 + revêtement PVD
μK10 + PVD Beschichtung
μK10 + PVD coating

- nuance très résistante à l'usure
- pour l'usinage en finition dans des conditions favorables des aciers, aciers inoxydables et alliages de titane

- sehr verschleissfeste Sorte
- für die Feinbearbeitung von Stahl, rostfreiem Stahl und Titanlegierungen bei guten Bearbeitungsbedingungen

- very wear resistant grade
- for light machining of steel, stainless steel and titanium alloys under favourable machining conditions

HN (μK10)

non revêtu
unbeschichtet
uncoated

- nuance micro-grain très résistante à l'usure
- recommandé pour l'usinage du laiton, de l'aluminium et du titane faiblement allié

- sehr verschleissfeste Feinkornsorte
- empfehlenswert für die Bearbeitung von Messing und niedrig legiertem Aluminium und Titan

- very wear resistant micro-grain grade
- suitable for the machining of brass and low alloyed aluminium and titanium

Paramètres de coupe indicatifs

Empfohlene Schnittwerte

Standard machining data

Matière Werkstoff Material	Tournage Drehen Turning		Foncer Einstechen Grooving	
	VC (m/min)	F (mm/U)	VC (m/min)	F (mm/U)
Acier de décolletage Automatenstahl Free-cutting steel	120 - 200	0.01 - 0.20	80 - 150	0.01 - 0.15
Acier Stahl < 600 N/mm ² Steel	80 - 160	0.01 - 0.18	70 - 120	0.01 - 0.12
Acier Stahl < 800 N/mm ² Steel	60 - 120	0.01 - 0.15	60 - 100	0.01 - 0.10
Acier Stahl > 800 N/mm ² Steel	50 - 100	0.01 - 0.12	40 - 80	0.01 - 0.08
Acier inoxydable Rostfreistahl Stainless steel	60 - 120	0.01 - 0.15	60 - 100	0.01 - 0.08
Aluminium	180 - 800	0.01 - 0.30	150 - 300	0.01 - 0.20
Titane Titan Titanium	30 - 70	0.01 - 0.12	30 - 50	0.01 - 0.06
Cuivre, laiton, bronze Kupfer, Messing, Bronze Copper, brass, bronze	100 - 500	0.01 - 0.30	100 - 300	0.01 - 0.20

Accessoires

Zubehöre

Accessories

Porte-outils Halter Holders			Option Art. N°
T216-H...	V-M4X9-T15	T15	SET-NM-TX15

Recommandation de serrage
Drehmoment Empfehlung
Clamping recommendation

3.0 Nm

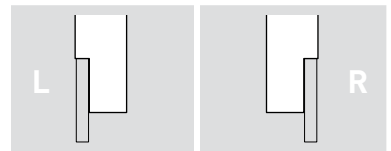
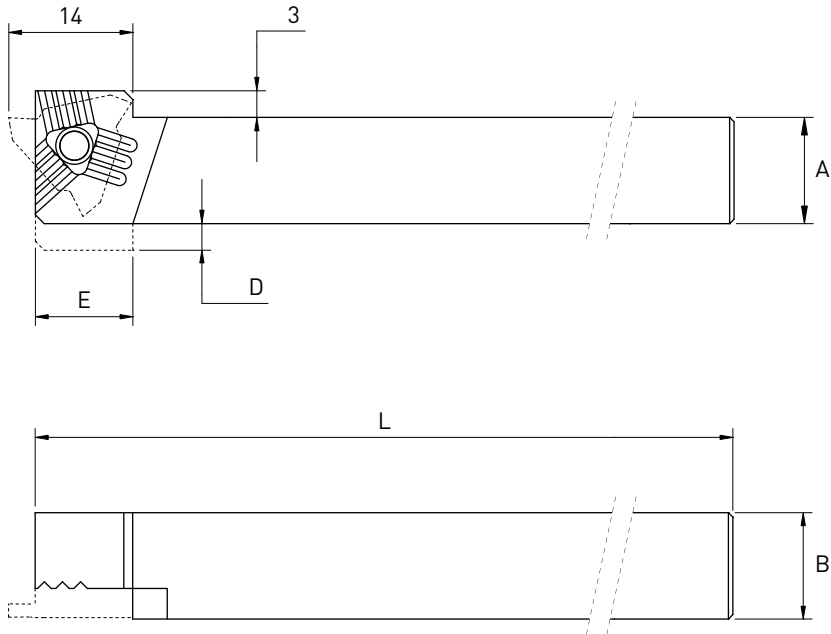


SET-NM-TX15

Porte-outils

Halter

Holder



Chaque support est livré avec vis et clé.
 Jeder Halter wird mit Spannschraube(n)
 und Schlüssel geliefert.
 Screw(s) and key are included with each
 tool holder.

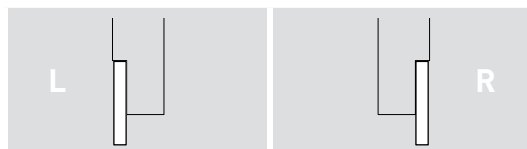
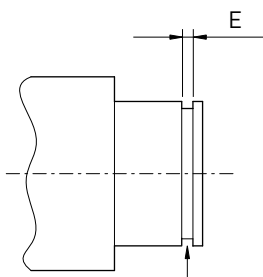
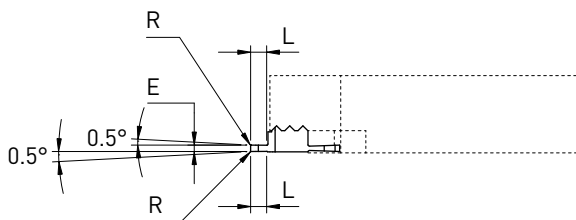
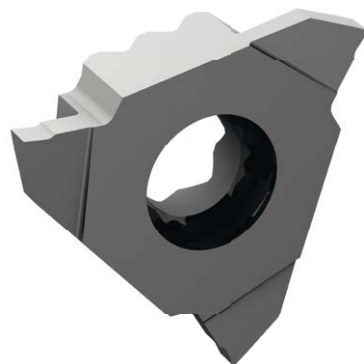
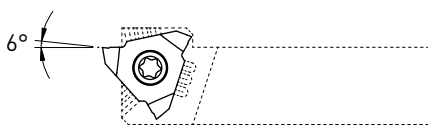
A	B	D	E	L	Art. N°	Art. N°
8	10	4	11	115	T216-H0810L	T216-H0810R
10	10	2	8	130	T216-H1010L	T216-H1010R
12	12	-	-	130	T216-H1212L	T216-H1212R
12	12	-	-	90	T216-H1212L-90	T216-H1212R-90
16	16	-	-	120	T216-H1616L	T216-H1616R
20	20	-	-	130	T216-H2020L	T216-H2020R

Plaquettes de gorge pour circlips

Einstechwendeplatte für Seegerring

Grooving inserts for retaining ring

GX



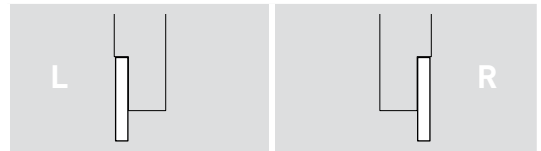
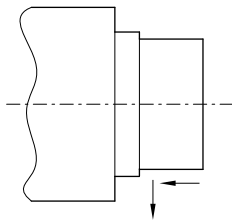
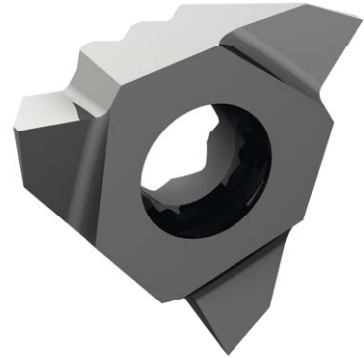
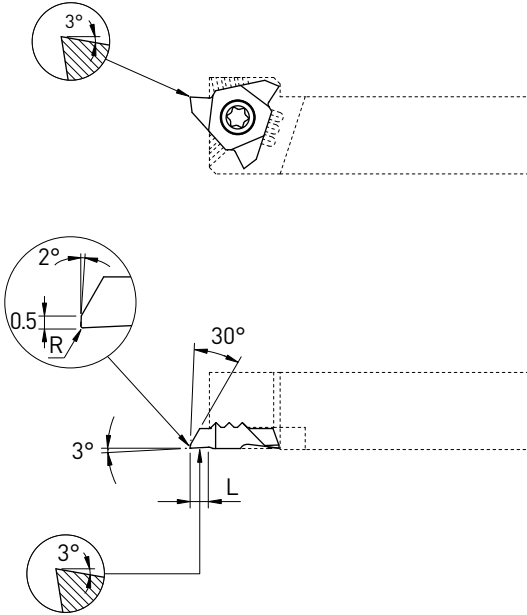
Selon DIN6799 et DIN471
 Gemäss DIN6799 und DIN471
 According to DIN6799 and DIN471



E ±0,01	L	R	L		R	
			Art. N°	HTA HN	Art. N°	HTA HN
0.26	0.8	0.03	T216L-GX026	■ ■	T216R-GX026	■ ■
0.36	0.8	0.03	T216L-GX036	■ ■	T216R-GX036	■ ■
0.46	0.8	0.03	T216L-GX046	■ ■	T216R-GX046	■ ■
0.50	1.5	0.03	T216L-GX050	■ ■	T216R-GX050	■ ■
0.57	1.5	0.03	T216L-GX057	■ ■	T216R-GX057	■ ■
0.67	1.5	0.03	T216L-GX067	■ ■	T216R-GX067	■ ■
0.77	2.0	0.03	T216L-GX077	■ ■	T216R-GX077	■ ■
0.87	2.0	0.03	T216L-GX087	■ ■	T216R-GX087	■ ■
0.97	2.5	0.03	T216L-GX097	■ ■	T216R-GX097	■ ■
1.00	2.5	0.03	T216L-GX100	■ ■	T216R-GX100	■ ■
1.10	2.5	0.03	T216L-GX110	■ ■	T216R-GX110	■ ■
1.20	2.5	0.03	T216L-GX120	■ ■	T216R-GX120	■ ■
1.30	2.5	0.03	T216L-GX130	■ ■	T216R-GX130	■ ■
1.50	2.5	0.03	T216L-GX150	■ ■	T216R-GX150	■ ■
1.60	2.5	0.03	T216L-GX160	■ ■	T216R-GX160	■ ■
1.85	2.5	0.03	T216L-GX185	■ ■	T216R-GX185	■ ■
2.00	2.5	0.03	T216L-GX200	■ ■	T216R-GX200	■ ■
2.50	2.5	0.03	T216L-GX250	■ ■	T216R-GX250	■ ■

Tournage avant
 Vorwärts drehen
 Front turning

FT



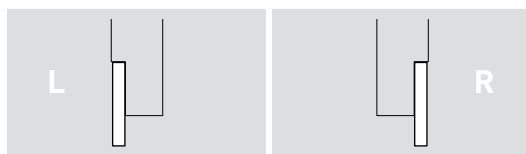
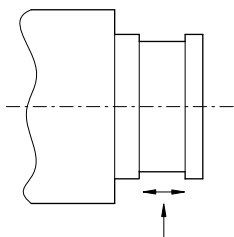
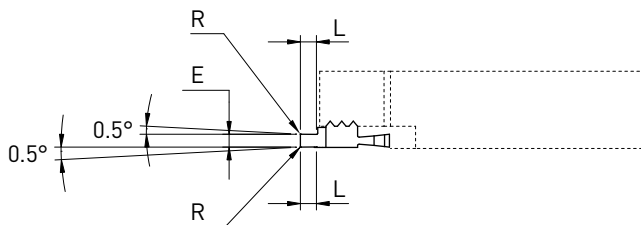
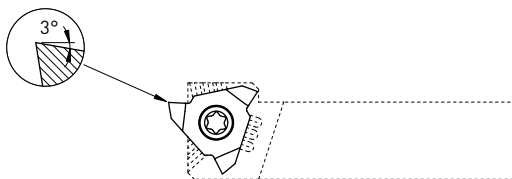
L	R	Art. N°	HTA		HN		
			HTA	HN	HTA	HN	
3.0	0.03	T216L-FT	■	■	T216R-FT	■	■
3.0	0.08	T216L-FT-R08	■	■	T216R-FT-R08	■	■

Foncer-tourner

Einstecken und drehen

Grooving and turning

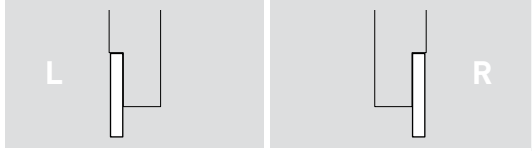
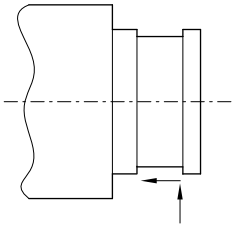
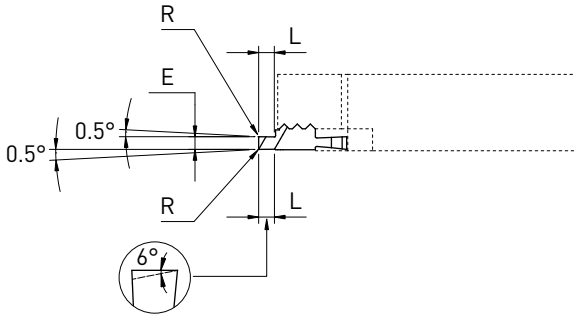
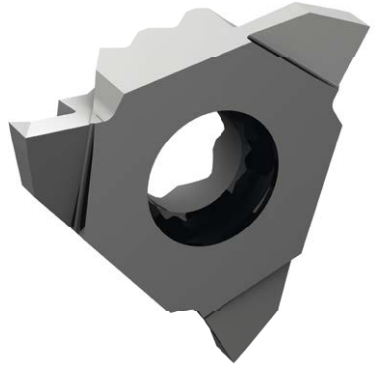
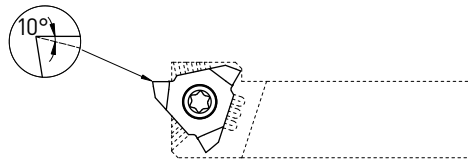
GT



E	L	R	Art. N°	HTA		Art. N°	HTA	
				HN	HN		HN	HN
0.5	1.5	0.03	T216L-GT050	■	■	T216R-GT050	■	■
1.0	2.5	0.03	T216L-GT100	■	■	T216R-GT100	■	■
1.0	2.5	0.08	T216L-GT100-R08	■	■	T216R-GT100-R08	■	■
1.5	2.5	0.03	T216L-GT150	■	■	T216R-GT150	■	■
1.5	2.5	0.08	T216L-GT150-R08	■	■	T216R-GT150-R08	■	■
1.5	2.5	0.15	T216L-GT150-R15	■	■	T216R-GT150-R15	■	■
2.0	2.5	0.03	T216L-GT200	■	■	T216R-GT200	■	■
2.0	2.5	0.08	T216L-GT200-R08	■	■	T216R-GT200-R08	■	■
2.0	2.5	0.15	T216L-GT200-R15	■	■	T216R-GT200-R15	■	■
2.5	2.5	0.15	T216L-GT250-R15	■	■	T216R-GT250-R15	■	■

- Foncer-tourner
- Einstechen und drehen
- Grooving and turning

GTX



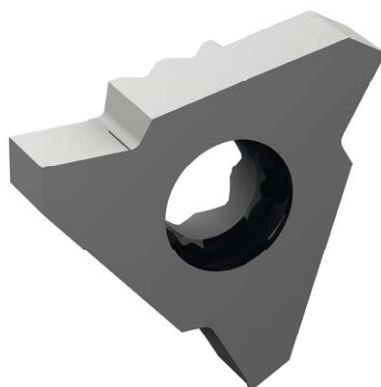
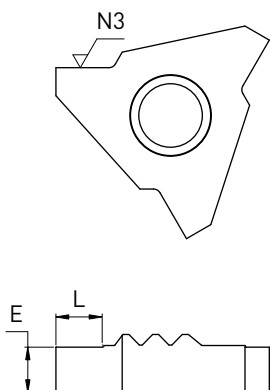
E	L	R	Art. N°	HTA		Art. N°	HTA	
				HN	HN		HN	HN
1.0	2.5	0.03	T216L-GTX100	■	■	T216R-GTX100	■	■
1.0	2.5	0.08	T216L-GTX100-R08	■	■	T216R-GTX100-R08	■	■
1.5	2.5	0.03	T216L-GTX150	■	■	T216R-GTX150	■	■
1.5	2.5	0.08	T216L-GTX150-R08	■	■	T216R-GTX150-R08	■	■
1.5	2.5	0.15	T216L-GTX150-R15	■	■	T216R-GTX150-R15	■	■
2.0	2.5	0.03	T216L-GTX200	■	■	T216R-GTX200	■	■
2.0	2.5	0.08	T216L-GTX200-R08	■	■	T216R-GTX200-R08	■	■
2.0	2.5	0.15	T216L-GTX200-R15	■	■	T216R-GTX200-R15	■	■
2.5	2.5	0.15	T216L-GTX250-R15	■	■	T216R-GTX250-R15	■	■

Plaquette ébauche

WSP-Rohling

Blank insert

EP



		L		R	
E	L	Art. N°	HTA HN	Art. N°	HTA HN
-3	3	T216L-EP	■	T216R-EP	■