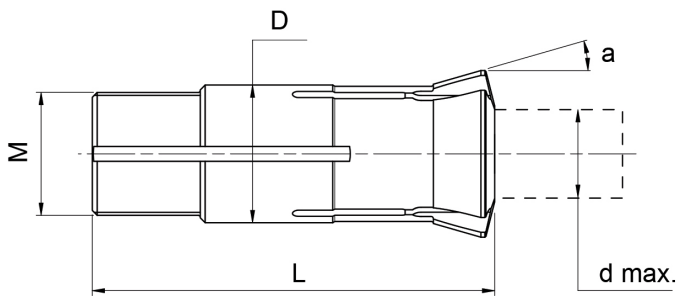


FULL GUIDE BUSH REFERENCE CHART TYPE



Reference Number	Dimensions				Minimum Capacity			Maximum Capacity			
	FLOYD	BODY Ø (mm)	LENGTH (mm)	THREAD	CONE	Ø (mm)	HEX (mm)	SQ (mm)	Ø (mm)	HEX (mm)	SQ (mm)
J2		7	30	6 x 0.5	16°	0.31	1.0	1.0	3.5	3.0	2.5
A1002		9	30	--	19°	0.31	1.0	1.0	4.0	3.5	2.5
B201		9	50	8 x 0.6	30°	0.31	1.0	1.0	5.0	4.5	2.5
J3		9	44	8 x 0.75	16°	0.31	1.0	1.0	5.0	4.5	3.0
A1004		11	30	--	19°	0.31	1.0	1.0	6.5	5.5	4.5
1352		11	53	10 x 0.8	16°	0.5	1.0	1.0	7.5	6.0	4.0
J4		11	53	10 x 0.75	16°	0.5	1.0	1.0	7.5	6.0	5.0
B211		12	50	12 x 1.0	30°	0.5	1.0	1.5	8.0	6.5	5.5
J5		12	50	10 x 0.75	16°	0.5	1.0	1.5	7.5	6.0	5.0
B300		13	41.5	12.5 x 0.75	15°	0.7	1.0	1.5	8.0	7.0	5.0
B304		14	64	13 x 0.75	16°	0.7	1.0	1.5	8.0	7.0	5.5
A1024		16	40	--	30°	0.7	1.0	1.5	8.0	7.0	5.5
A1008		16	30	--	30°	0.7	1.5	1.5	10.0	8.0	7.0
B203		16	61	15 x 1.0	19°	0.7	1.5	1.5	11.0	9.5	8.0
1353		16	59	14 x 1.0	16°	0.7	1.5	1.5	10.5	9.0	7.5
J6		16	58	14 x 1.0	16°	0.7	1.5	1.5	10.5	9.0	7.5
B212A		18	59	16 x 1.0	30°	1.0	1.5	2.0	12.0	11.0	9.0
Top 100		18	100	18 x 1.0	20°	1.0	1.5	3.0	13.0	11.0	9.0
A1025		20	40	--	30°	1.0	1.5	2.0	11.0	9.0	7.5
B208		20	55	20 x 1.0	30°	1.0	1.5	2.0	13.0	11.0	9.0
N800		21	57.5	18 x 1.0	12°	1.5	2.0	2.0	11.0	9.5	8.0
J7A		22	68	19 x 1.0	16°	1.5	2.0	2.0	16.0	14.0	11.0
39.001		22	68	22 x 1.0	16°	1.5	2.0	2.0	18.0	15.0	13.0
A1010		24	42	--	19°	1.5	2.0	2.0	15.0	13.0	10.0
B238		24	61	24 x 1.0	30°	1.5	2.0	2.0	16.0	14.0	11.0
B302		27	57.5	24 x 1.0	12°	2.0	2.5	3.0	16.0	14.0	11.0
A1011		28	45	--	29°	2.0	2.5	3.0	20.0	17.0	14.0
B260		28	81	25 x 1.0	30°	2.0	2.5	3.0	20.0	18.0	15.0
B261		28	82	25 x 1.0	16°	2.0	2.5	3.0	20.0	18.0	15.0
B261R*		28	82	27 x 1.0	16°	20.0	17.0	15.5	23.0	19.5	16.0
B261R*		28	82	28 x 1.0	16°	20.0	17.0	15.5	24.0	22.5	16.5
A1026		30	60	--	29°	2.5	2.5	3.0	17.0	14.0	12.0
A1012		32	45	--	19°	2.5	2.5	3.0	22.0	19.0	15.0
B214		32	71	32 x 1.0	30°	2.5	2.5	3.0	22.00	19.0	15.0
A1027		34	60	--	29°	2.5	3.0	3.0	22.0	19.0	15.0
N227		34	87.5	34 x 1.0	10°	2.5	3.0	4.0	25.0	22.0	18.0
Top 200		34	150	32 x 1.5	20°	3.0	3.0	4.0	26.0	22.0	18.0
A1013		38	45	--	19°	3.0	3.0	4.0	28.0	24.0	19.0
A1030		38	60	--	19°	3.0	3.0	4.0	28.0	24.0	19.0
B207		40	71	40 x 1.0	30°	3.0	3.0	4.0	30.0	26.0	20.0
B207A		40	72	36 x 1.0	30°	3.0	4.0	4.0	26.0	22.0	20.0
A1028		42	72	--	29°	3.0	4.0	4.0	26.0	22.0	20.0
A1032		42	60	--	19°	3.0	4.0	4.0	28.0	24.0	20.0
N229		42	82	40 x 1.0	16°	4.0	4.0	4.0	32.0	26.0	20.0
N229R*		42	82	42 x 1.0	16°	32.0	27.0	21.0	36.0	30.0	24.0

The Guide Bushes are reinforced oversized bushes. Special or modified nuts will be required. These are supplied with **NO GUARANTEE.**