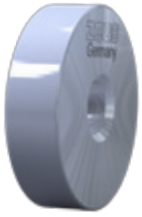


Burnishing rolls



RRA



RRE

zeus burnishing rolls can be used in standard zeus form knurling tools. On request, we can develop and produce a custom holding system.

Use in this tool system is suitable for machining cylindrical workpieces, bores, end faces, conical workpieces and for convex and concave outer contours.

Applications:

zeus burnishing rolls are used primarily for roller-burnishing and supporting round material during machining on lathes.

Result:

- Improved surface quality
- Increased dimensional stability
- Increased hardness of surfaces

Advantages:

- Burnished workpieces exhibit low friction and increased resistance to corrosion after machining
- Reworking, such as grinding, honing and lapping can be replaced by simple roller-burnishing machining
- When used as support rolls, they reduce wear on the bearings and clamping devices and minimise the pressure on the workpiece

Burnishing roll type RRA – cylindrical

Type	Dimension [mm]			Version		
	Ø	Width	Bore	N° 04 turned & polished, Rz 4 µm	N° 05 ground, Rz 2–3 µm	N° 06 ground & polished, Rz 1 µm
RRA	10	4	4	✓	✓	✓
	15	4	4	✓	✓	✓
	20	8	6	✓	✓	✓
	25	8	6	✓	✓	✓

Burnishing roll type RRE – convex

Type	Dimension [mm]			R	Version		
	Ø	Width	Bore		N° 04 turned & polished, Rz 4 µm	N° 05 ground, Rz 2–3 µm	N° 06 ground & polished, Rz 1 µm
RRE	10	4	4	2	✓	✓	✓
	15	4	4	2	✓	✓	✓
	20	8	6	6	✓	✓	✓
	25	8	6	6	✓	✓	✓