



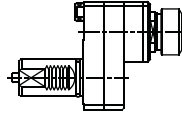
## MAZAK

Models

**MULTIPLEX 610/6100**  
**MULTIPLEX 620/6200**

MK.001.6100  
MK.001.6200

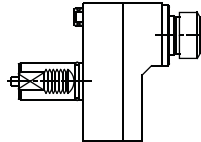
**AXIAL  
OFFSET**



ER-32  
RATIO 1:1  
5.000 RPM MAX.

MK.006.6100  
MK.006.6200

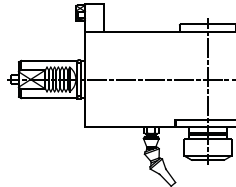
**AXIAL OFFSET  
WITH HIGH PRESSURE  
COOLANT THROUGH**



ER-32  
RATIO 1:1  
5.000 RPM MAX.

MK.010.6100  
MK.010.6200

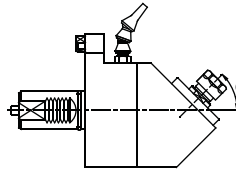
**RADIAL**



ER-32  
RATIO 1:1  
5.000 RPM MAX.

MK.012.6100  
MK.012.6200

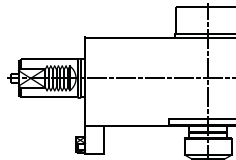
**FIXED ANGLE  
(ANY ANGLE)**



ER-16  
RATIO 1:1.3  
5.000 RPM MAX.

MK.016.6100  
MK.016.6200

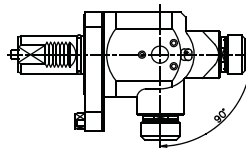
**RADIAL WITH HIGH  
COOLANT THROUGH**



ER-32  
RATIO 1:1  
5.000 RPM MAX.

MK.021.6100  
MK.021.6200

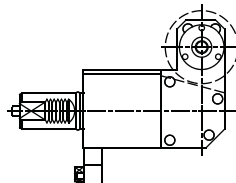
**RADIAL  
ADJUSTABLE**



ER-25  
RATIO 1:1  
5.000 RPM MAX.

MK.030.6100  
MK.030.6200

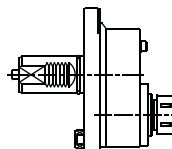
**SAW-MILL**



Upon request  
RATIO 1:1  
3.500 RPM MAX.

MK.050.6100  
MK.050.6200

**AXIAL ADJUSTABLE  
"Y" AXIS ± 14 mm**



ER-25  
RATIO 1:1.15  
5.000 RPM MAX.



**SPECIALS: NO PROBLEM**





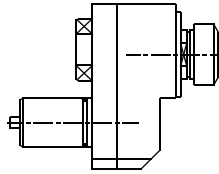
## MAZAK

Models

**MULTIPLEX 630/6300**

MK.001.6300

**AXIAL  
OFFSET**

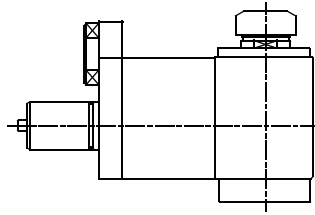


ER-40  
RATIO 2:1  
5.000 RPM MAX.



MK.010.6300A

**RADIAL**

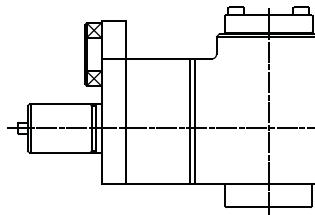


ER-40  
RATIO 1:1  
5.000 RPM MAX.



MK.010.6300B

**RADIAL**

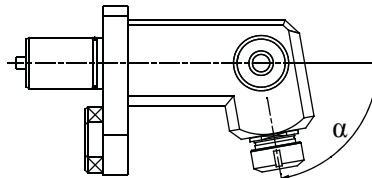


ISO-40  
RATIO 1:1  
5.000 RPM MAX.



MK.012.6300

**FIXED ANGLE  
(ANY ANGLE)**

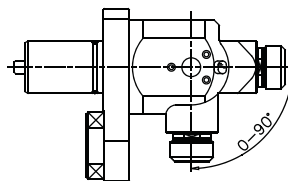


ER-32  
RATIO 1:1  
5.000 RPM MAX.



MK.021.6300

**RADIAL  
ADJUSTABLE**

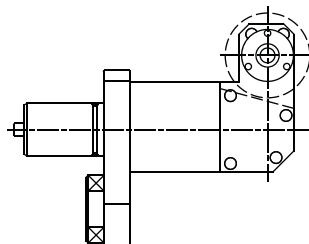


ER-25  
RATIO 1:1  
5.000 RPM MAX.



MK.030.6300

**SAW-MILL**



Upon request  
RATIO 1:1  
3.500 RPM MAX.

**SPECIALS: NO PROBLEM**

TOOLING FOR **BARUFFALDI - BIGLIA - CMZ - DOOSAN - DUPLOMATIC - EMCO - HAAS - INDEX - MIYANO - MORI SEIKI - NAKAMURA - OKUMA - SAUTER - SCHAUBLIN - SPINNER - ETC.** PLEASE ASK FOR LITERATURE

Rec del Molí 11-17 08105 SANT FOST DE CAMPSENTLLES - BARCELONA (SPAIN) TEL.: 34.93.593.36.00 - FAX.: 34.93.570.07.99





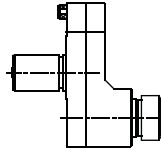
## MAZAK

### Models

### SQT 100M / 10M NEXUS 100M / 150M

MK.001.SQ100

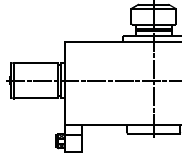
**AXIAL  
OFFSET**



ER-32  
RATIO 1:1  
5.000 RPM MAX.

MK.010.SQ100

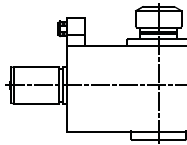
**RADIAL**



ER-32  
RATIO 1:1  
5.000 RPM MAX.

MK.033.SQ100

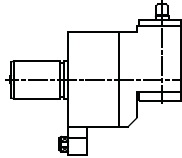
**RADIAL  
SUBSPINDLE**



ER-32  
RATIO 1:1  
5.000 RPM MAX.

MK.013.SQ100

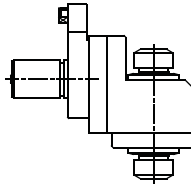
**RADIAL  
SPEEDER**



ER-8  
RATIO 1:4  
15.000 RPM MAX.

MK.008.SQ100

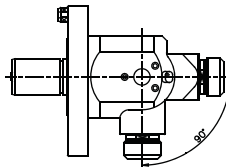
**RADIAL  
DOUBLE  
OUTPUT**



ER-25 / ER-25  
RATIO 1:1  
5.000 RPM MAX.

MK.021.SQ100

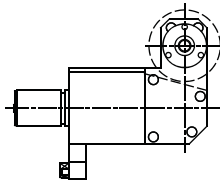
**RADIAL  
ADJUSTABLE**



ER-25  
RATIO 1:1  
5.000 RPM MAX.

MK.030.SQ100

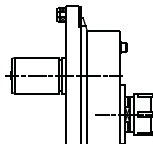
**SAW-MILL**



Upon request  
RATIO 1:1  
3.500 RPM MAX.

MK.050.SQ100

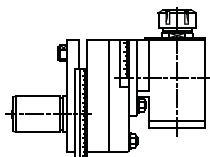
**AXIAL ADJUSTABLE  
"Y" AXIS ± 14 mm**



ER-32  
RATIO 1:1.15  
5.000 RPM MAX.

MK.051.SQ100

**RADIAL  
DOUBLE  
SWIVELING**



ER-25  
RATIO 1:1  
5.000 RPM MAX.



**SPECIALS: NO PROBLEM**





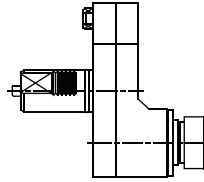
## MAZAK

### Models

**SQT 200M / 250M / 15M / 18M  
NEXUS 200M / 250M**

MK.001.SQ200

**AXIAL  
OFFSET**

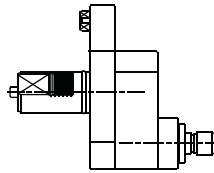


ER-32  
RATIO 1:1  
5.000 RPM MAX.



MK.026.SQ200

**AXIAL  
OFFSET  
SPEEDER**

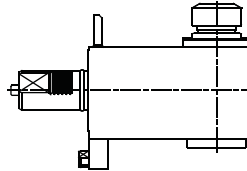


ER-16  
RATIO 1:4  
12.000 RPM MAX.



MK.010.SQ200

**RADIAL**

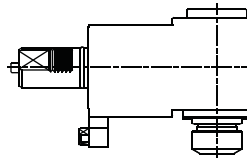


ER-32  
RATIO 1:1  
5.000 RPM MAX.



MK.033.SQ200

**RADIAL  
SUBSPINDLE**

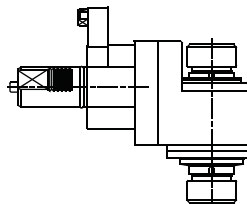


ER-32  
RATIO 1:1  
5.000 RPM MAX.



MK.008.SQ200

**RADIAL  
DOUBLE  
OUTPUT**

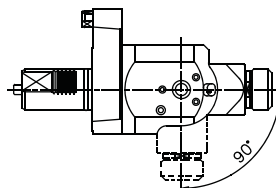


ER-32  
RATIO 1:1  
5.000 RPM MAX.



MK.021.SQ200

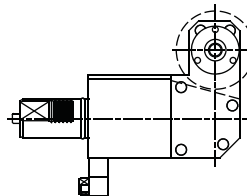
**RADIAL  
ADJUSTABLE**



ER-25  
RATIO 1:1  
5.000 RPM MAX.

MK.030.SQ200

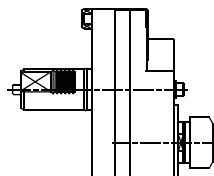
**SAW-MILL**



Upon request  
RATIO 1:1  
3.500 RPM MAX.

MK.050.SQ200

**AXIAL ADJUSTABLE  
"Y" AXIS ± 37 mm**



ER-32  
RATIO 1:1  
5.000 RPM MAX.

**SPECIALS: NO PROBLEM**

TOOLING FOR **BARUFFALDI - BIGLIA - CMZ - DOOSAN - DUPLOMATIC - EMCO - HAAS - INDEX - MIYANO - MORI SEIKI - NAKAMURA - OKUMA - SAUTER - SCHAUBLIN - SPINNER - ETC.** PLEASE ASK FOR LITERATURE

Rec del Molí 11-17 08105 SANT FOST DE CAMPSENTELLES - BARCELONA (SPAIN) TEL.: 34.93.593.36.00 - FAX.: 34.93.570.07.99





## MAZAK

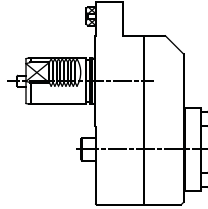
Models

**SQT 28M / 30M / 300M**

**NEXUS 300M / 350M / 400M / 450M**

MK.001.SQ28

**AXIAL  
OFFSET**

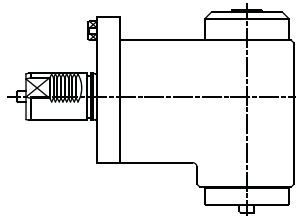


ISO-40  
RATIO 1:1  
3.000 RPM MAX.



MK.010.SQ28

**RADIAL**

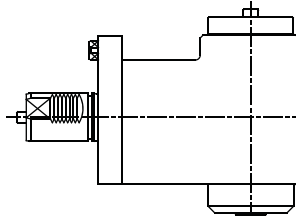


ISO-40  
RATIO 1:1  
3.000 RPM MAX.



MK.033.SQ28

**RADIAL  
SUBSPINDLE**

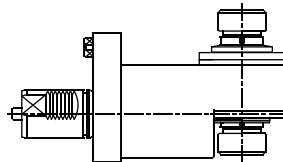


ISO-40  
RATIO 1:1  
3.000 RPM MAX.



MK.008.SQ28

**RADIAL  
DOUBLE  
OUTPUT**

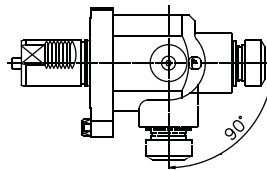


ER-32  
RATIO 1:1  
3.000 RPM MAX.



MK.021.SQ28

**RADIAL  
ADJUSTABLE**

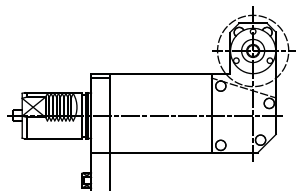


ER-32  
RATIO 1:1  
3.000 RPM MAX.



MK.030.SQ28

**SAW-MILL**

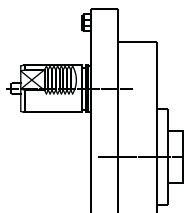


Upon request  
RATIO 1:1  
3.000 RPM MAX.



MK.050.SQ28

**AXIAL "Y" AXIS**



ER-32A  
RATIO 1:1  
3.000 RPM MAX.

**SPECIALS: NO PROBLEM**

