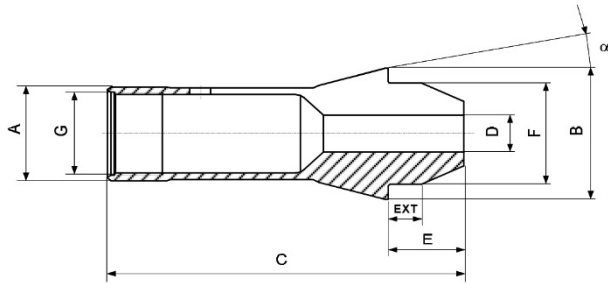




# FLOYD

THE TOOLING SPECIALISTS FOR PRECISION COMPONENT MACHINING

## Extended Nose Collets (Steel/Carbide/Wave)



\*These collets are also available in both steel and carbide lined versions, with WAVE slots designed to prevent the marking of finished turned or threaded components.

Collet Type	DIMENSIONS							Steel	Carbide Lined
	A	B	C	E (Nose Length Options)	F	G*	a°	Min Ø Max Ø	Min Ø Max Ø
F8-577	8	12	45.5 47.5	8 10	8	M6 x 0.5	16°	0.50-6.0	0.50-5.0
F10-86	10	16	50 52 54	8 10 12	10	M8 x 0.5	20°	0.50-7.0	0.50-6.0
F13-357	13	19	68 70	10 12	13	M11 x 0.75	16°	0.50-10.0	0.50-8.0
F15-580	15	21	68 71 73	10 13 15	15	M12 x 0.75	16°	0.50-12.0	0.50-11.0
F16-1076	16	21	71 73 78	13 15 20	16	M14 x 0.75	16°	0.50-12.0	0.50-11.0
F20-87	20	28	75 80	15 20	21	M17 x 0.75	16°	0.50-16.0	0.50-15.0
F20-201	20	26	62 64 69	13 15 20	19	M18 x 1	15°	0.50-16.0	0.50-14.0
F22-71	22	30	64 69	15 20	21	-	15°	1.0-17.0	1.0-16.0
TF-24	23.8	28.4	70 75	15 20	22	-	15°	1.0-18.0	1.0-17.0
F25-64	25	35	85 87 92	18 20 25	27	M22 x 1	16°	1.0-20.0	1.0-20.0

+44 (0) 1462 491919 | +44 (0) 1462 490835 | sales@floydautomatic.co.uk | www.floydautomatic.co.uk

Floyd Automatic Tooling Ltd 17 Bondor Business Centre, London Road, Baldock, Herts, SG7 6HP/GB | VAT Registration No. GB 563 5884 05 | Registered in England No. 255659  
Registered Offices: Sterling House, 27 Hatchlands Road, Redhill Surrey, RH1 6RW

Association Memberships: Manufacturing Technologies Association & The British Turned Parts Manufacturers Association



# FLOYD

THE TOOLING SPECIALISTS FOR PRECISION COMPONENT MACHINING

## Extended Nose Collets (Steel/Carbide/Wave)

<b>F27-22</b>	27	38	83 90	18 25	30	-	15°	1.0-23.0	1.0-21.0
<b>F28-93</b>	28	38	83 88	20 25	28	-	15°	1.0-23.0	1.0-22.0
<b>F30-101</b>	30	38	79	20	32	-	15°	2.0-26.0	2.0-23.0
<b>F32-221</b>	32	45	82 87 92	15 20 20	34	-	15°	2.0-27.0	2.0-25.0
<b>F35-2013</b>	35	4348	90 100	27 27	34 38	-	15°	2.0-30.0	2.0-27.0
<b>F37-740</b>	37	47	102 107 107	20 25 35	40	-	16°	2.0-32.0	2.0-30.0
<b>F38-72</b>	38.1	49	123	24.5	38	-	15°	2.0-32.0	3.0-30.0
<b>F42-99</b>	42	55	105 110	20 25	42	-	15°	2.0-36.0	3.0-34.0
<b>F48-81</b>	48	60	113	28	50	-	15°	2.0-42.0	3.0-38.0

+44 (0) 1462 491919 | +44 (0) 1462 490835 | sales@floydautomatic.co.uk | www.floydautomatic.co.uk

Floyd Automatic Tooling Ltd 17 Bondor Business Centre, London Road, Baldock, Herts, SG7 6HP/GB | VAT Registration No. GB 563 5884 05 | Registered in England No. 255659  
Registered Offices: Sterling House, 27 Hatchlands Road, Redhill Surrey, RH1 6RW

Association Memberships: Manufacturing Technologies Association & The British Turned Parts Manufacturers Association