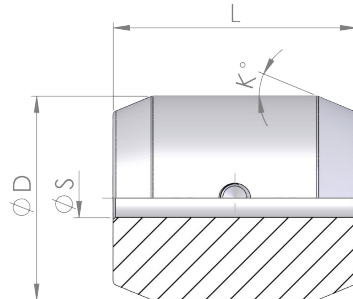
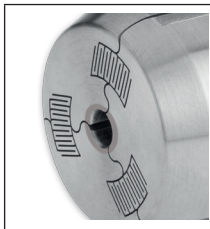


SDK - Adaptive Guide Bushing



- Highest flexibility due to integrated spring package.
- Single piece construction.
- High concentricity.
- Can be ground up to one millimeter.
- Cost-effective - ground bushes can be reused.
- Chips cannot get caught in the bush.
- The bush closes completely and protects the material to be processed from pressure marks and dirt.

Version	ØD (mm)	Length L (mm)	Cone K (degree)	ØS
SDK 48	48	60	22.5°	3.0 - 36.0
SDK 42	42	50	22.5°	3.0 - 32.0
SDK 33	33	40	22.5°	3.0 - 23.0
SDK 28	28	40	22.5°	3.0 - 20.0
SDK 24	24	35	22.5°	3.0 - 12.0



Guide bush with hard-metal insert

- Hard-metal guide bushes available for workpiece guiding
- For all current sliding headstock automatic lathes
- Provides longer service life
- The material used should be specified when making the request



Steel-hardened and bl-coated guide bush

- Provides longer service life
- For material with inherent sliding properties such as brass, bronze, copper, plastic etc.
- Serves to prevent the material from welding in the guide bush



Special profiles

- All contours feasible